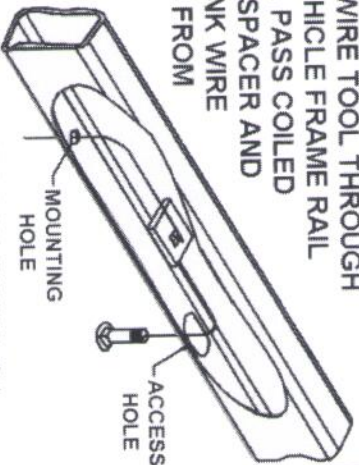


[illegible]

FISHWIRE TECHNIQUE

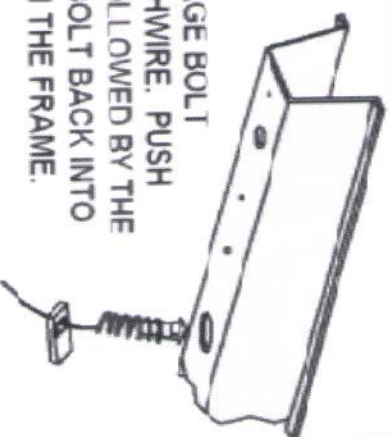
INSERT COILED END OF FISHWIRE TOOL THROUGH HITCH MOUNTING HOLE IN VEHICLE FRAME RAIL AND OUT THE ACCESS HOLE. PASS COILED END OF FISHWIRE THROUGH SPACER AND THREAD BOLT INTO COIL. KINK WIRE TO KEEP SPACER SEPERATE FROM BOLT AS SHOWN. PULL FISHWIRE, SPACER, AND BOLT THROUGH FRAME AND OUT MOUNTING HOLE. USE FISHWIRE TO GUIDE HITCH DURING MOUNTING AND PREVENT LOSS OF BOLT / SPACER INSIDE FRAME RAIL.

****NOTE: SOME VEHICLES MAY FISHWIRE THROUGH END OF FRAME****



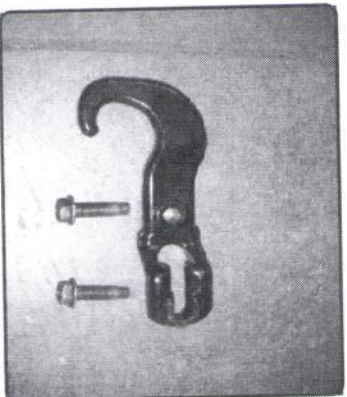
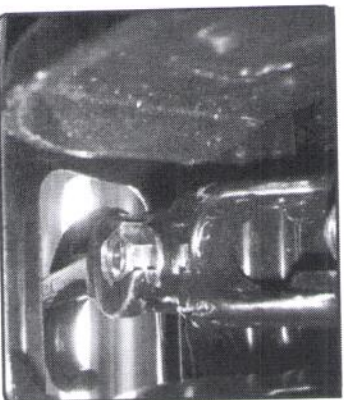
REVERSE PULL FISHWIRE TECHNIQUE

ATTACH FISHWIRE TO CARRIAGE BOLT AND SLIDE SPACER ONTO FISHWIRE. PUSH THE BOLT THRU THE HOLE FOLLOWED BY THE SPACER (AS SHOWN). PULL BOLT BACK INTO POSITION, PROTRUDING FROM THE FRAME.



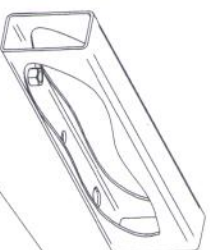
STEP #1

REMOVE TOW HOOKS AND SET ASIDE FOR LATER RE-ATTACHMENT. HARDWARE IS NOT TO BE RE-USED.

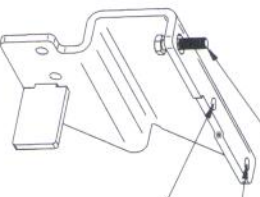


STEP #2

RAISE SIDE PLATE UP TO FRAME RAIL AND SECURE EACH SIDE PLATE AT ITS FORWARD MOST MOUNTING HOLE. (FINGER TIGHTEN). ALIGN REAR MOST MOUNTING HOLE AND USE MIDDLE HOLE IN EACH SIDE PLATE AS A DRILLING TEMPLATE CENTER MARK. THE HOLE POSITION ON EACH FRAME RAIL AND REMOVE SIDE PLATES.

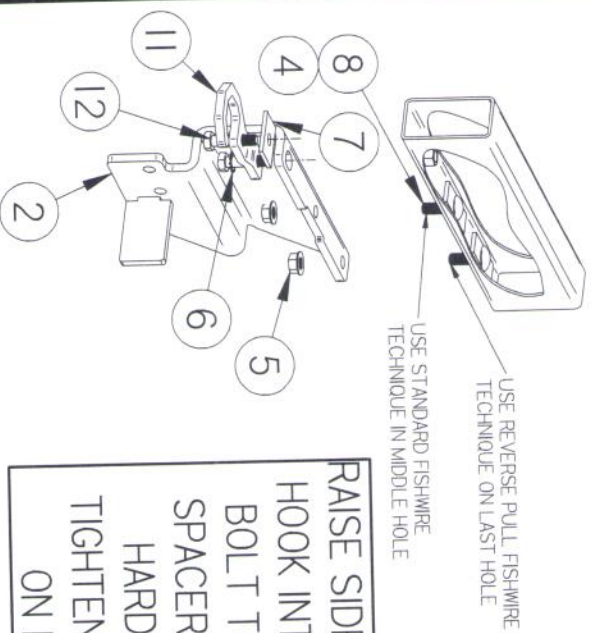


HOLE MUST BE ALIGNED TO HOLE ON FRAME RAIL
DRILL TEMPLATE HOLE CENTER MARK AND USE 17/32" DRILL BIT



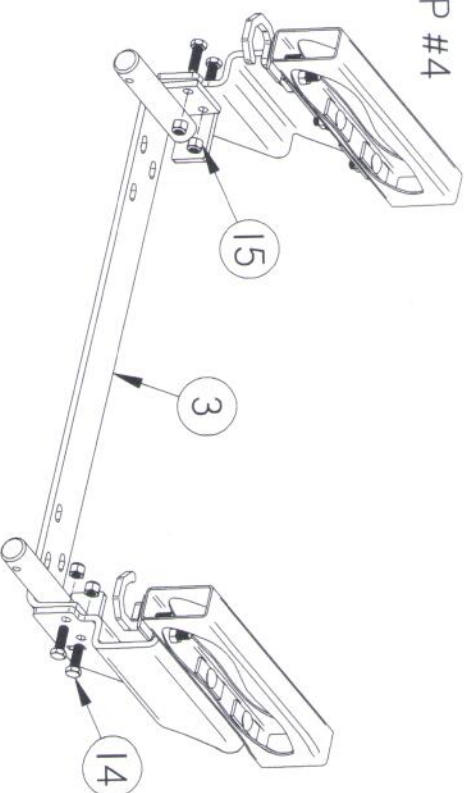
STEP #3

PASSENGER SIDE SHOWN



RAISE SIDE PLATE AND TOW HOOK INTO POSITION AND BOLT TO FRAME USING SPACERS, 1/2-13" & M12 HARDWARE (FINGER TIGHTEN ONLY). REPEAT ON DRIVER SIDE.

STEP #4



SECURELY FASTEN 5XM5 (297-679) CROSS MEMBER TO SIDE PLATES USING 1/2-13 HARDWARE SHOWN. TIGHTEN ALL REMAINING HARDWARE LEFT OVER ON SIDE PLATES & TOW HOOKS.

STEP 4

INSTALLATION COMPLETE

